

Why Recycle?

RECYCLING IS THE LAW.

The New Jersey Statewide Mandatory Source Separation and Recycling Act became law in April, 1987.

RECYCLING SAVES ENERGY.

Making products from recycled materials uses less energy and makes us less dependent on foreign oil.

RECYCLING REDUCES GARBAGE

dumped into diminishing landfills, burned in incinerators or shipped out-of-state.

RECYCLING CONSERVES NATURAL RESOURCES.

For example, recycling one ton of paper saves 17 trees.

RECYCLING SAVES MONEY.

Taxpayers save money on disposal costs that continue to rise.

Who Must Recycle?

Residents — All homeowners and tenants, including occupants of multi-family housing units.

Landlords — All owners of multi-family units.

Businesses — All owners, lessees or occupants of all public and private business, commercial and/or industrial establishments. This includes, but is not limited to, manufacturing, retailing and/or service, food and professional establishments, and/or non-profit or for profit corporate entities.

Institutions — All owners, lessees and occupants of any municipal and state government facilities, all religious, educational and healthcare facilities, and all public and/or private civic organizations.



Recycle IT'S THE LAW!

In order to solve the solid waste crisis we all need to make the terms **Reduce, Reuse and Recycle** part of our everyday vocabulary.

Reduce... Each American disposes of about 5 pounds of garbage everyday. Reducing the amount we throw away is the first step toward reducing the amount of garbage that is landfilled.

Reuse... One of the keys to controlling the amount of material we throw away is to reuse products as many times as possible. Reuse also conserves natural resources because fewer products have to be manufactured.

Recycle... By separating your recyclable materials from your garbage, you can conserve natural resources, save energy, save money and reduce the amount of garbage that is landfilled.

For more information call the
Hudson County Environmental Hotline
1-800-540-0987



Thomas A. DeGise, County Executive
John L. Shinnick, Chairman
Norman M. Guerra, Executive Director

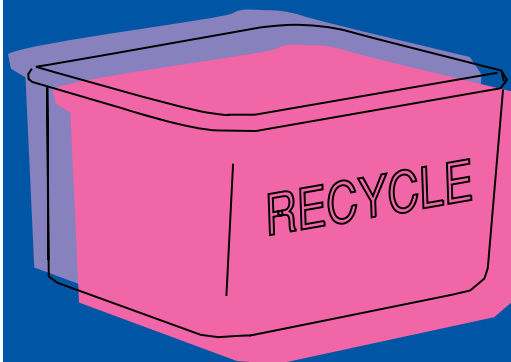
A Quick Guide to Recycling in Hudson County



What to Recycle?

Each municipality has its own recycling ordinance and its own requirements for the collection of recyclable materials. For details on the recycling program in your community call your Municipal Recycling Coordinator:

- Bayonne**
201-858-6099
- East Newark**
973-481-2903
- Guttenberg**
201-861-3011
- Harrison**
973-268-2468
- Hoboken**
201-420-2049
- Jersey City**
201-432-4645
- Kearny**
201-998-3700
- North Bergen**
201-422-0100
- Secaucus**
201-330-2080
- Union City**
201-348-5840
- Weehawken**
201-319-6070
- West New York**
201-295-5232



RECYCLING IS EASY

Newspaper: Everything included in your paper is acceptable. Tie, with string or twine only, in bundles no more than 12 inches high.

Corrugated: Corrugated cardboard boxes are the type used for stereos, furniture, etc. Tie flattened cardboard, with string or twine only, in bundles no larger than 3 ft. x 3 ft. x 1 ft. thick.

Mixed Paper: Many municipalities now collect mixed paper at the curbside or at their drop-off center. The mix varies from municipality to municipality. Call your municipal recycling coordinator or the HCIA Environmental Hotline for specific materials allowed.

Magazines: Some municipalities accept magazines in their mixed paper collection or at drop-off centers.

High-Grade: Many recycling markets accept white and/or colored paper. Look in the yellow pages under "Recycling Centers" or "Waste Paper" or contact the HCIA for a list of these markets.

Junk Mail: Much of the junk mail you receive is recyclable, so think twice before throwing it away. Many municipalities accept junk mail in their mixed paper collection or at a drop-off center.

Commingled: Each municipality in Hudson County collects commingled glass, food and beverage containers, aluminum cans, tin or bi-metal cans, and plastic containers (#1 and #2 only). All containers should be rinsed (it is not necessary to remove caps, lids or labels) and placed together in a waterproof receptacle.

Appliances: If an appliance cannot be repaired – Recycle it! Each municipality has a white goods collection program, call for details. Some small appliances may be brought to the HCIA Household Hazardous Waste Collection Program held during the Spring and Fall. Call the HCIA Environmental Hotline or check our website for more information on the HHW program.



Metals: Metals such as paint cans, pipes and siding cannot be recycled with your aluminum and tin cans. Look in the Yellow Pages under "Scrap Metal" if you are disposing of a large quantity of metal. Some communities may collect scrap metal along with white goods.

Batteries: When you buy a new automobile battery, ask the dealer to recycle the old one. You can also bring automobile batteries and household batteries to the HCIA Household Hazardous Waste Collection Days held during the Spring and Fall. Call the HCIA Environmental Hotline or check our website for more information on the HHW program.

Motor Oil: When a service station changes your oil, it recycles the used oil. When you change your own oil, place the used oil in a clean container, label it and bring to a service station, municipal collection site or the HCIA Household Hazardous Waste Collection Program.

Tires: Several municipalities accept passenger car tires at their drop-off sites.

Leaves: Leaves are banned from landfills in New Jersey. From September through December of each year, all Hudson County municipalities have special collections for separated leaves. Call your Municipal Recycling Coordinator for details.

Yard Waste: These organic materials can be turned into a soil conditioner through composting. Call the HCIA Environmental Hotline for more information on the Hudson County Yard-Fest programs.

Christmas: Many municipalities operate recycling programs. The trees are chipped for use in municipal and county parks.

Clothing: Clean, used clothing can be sold or donated. Call local charitable or religious organizations to find out if they can use old clothing



Do NOT Recycle...

Do not include plastic-, foam-, or wax-coated cardboard, or cardboard like that found in cereal and pizza boxes with your corrugated cardboard.

Do not include foil products, aerosol cans, paint cans or scrap metal with your commingled aluminum and tin cans.

Do not include window glass, mirrors, ceramics, clay bottles, flower pots, dishes, Pyrex, ornamental glass, or light bulbs with your commingled glass.

Do not include plastic wrap or packaging, plastic tubs (such as margarine or yogurt container), foam, motor oil containers or antifreeze containers with your plastics.

